



## COMPLEX INDUSTRIES

# FORGED IRON TRIM OPTIONS

### Trim Your Doors With Ease

Creative Entries not only brings you the best forged iron doors, but also the easiest to install and trim out. By utilizing a standard 6" jamb depth, Creative forged iron doors provide the perfect size to be utilized with both 4-9/16" and 6-9/16" wall depths.

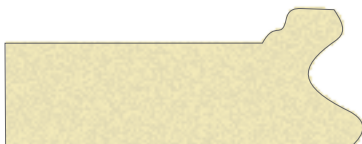
A standard offering of four Flex Trim profiles (shown below) accommodate both straight and radius trim needs. Without the deterioration associated with real wood, virtually no seams to crack, and the ability to be painted or stained, Flex Trim moldings meet the requirements of discerning builders and homeowners.



**4064-BR**  
1-1/4" x 2" Brickmold



**KCR627PR**  
7/8" x 1-7/8"  
Overlapping Profile  
(for exterior wall that may be recessed)



**VIK629PR**  
1" x 2-1/2" Stucco Trim  
(can be used with either side profile)



**ABS34X112**  
3/4" x 1-1/2"  
Flatstock

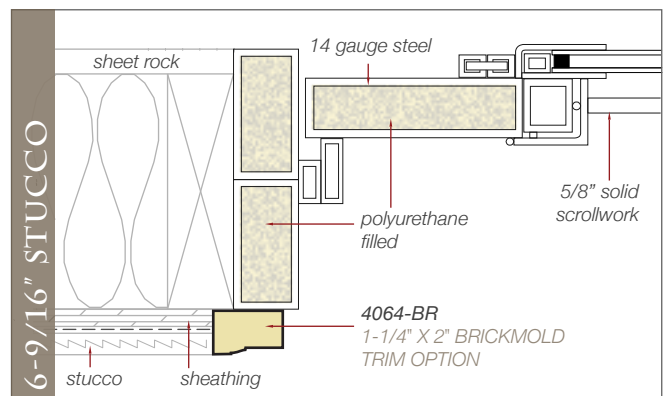
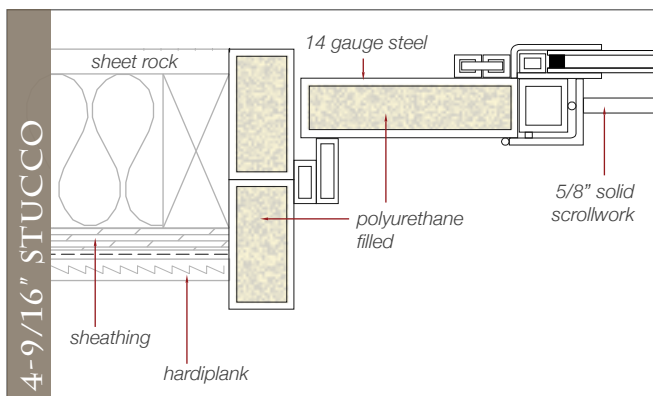
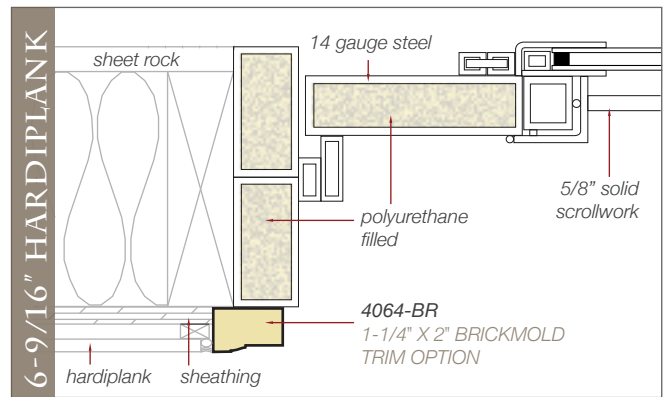
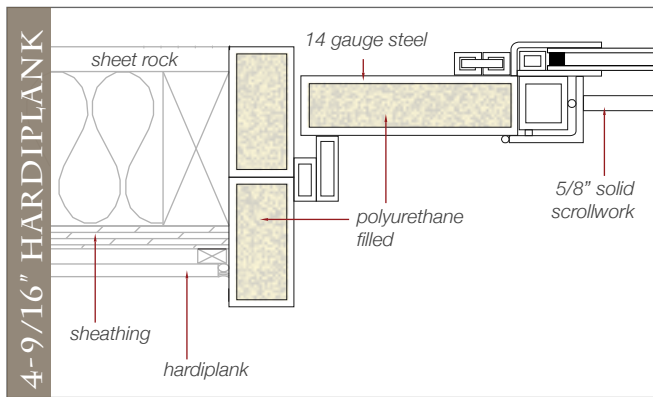
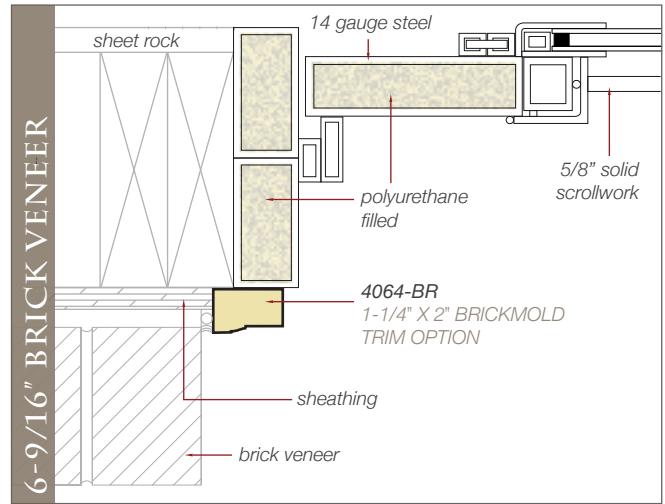
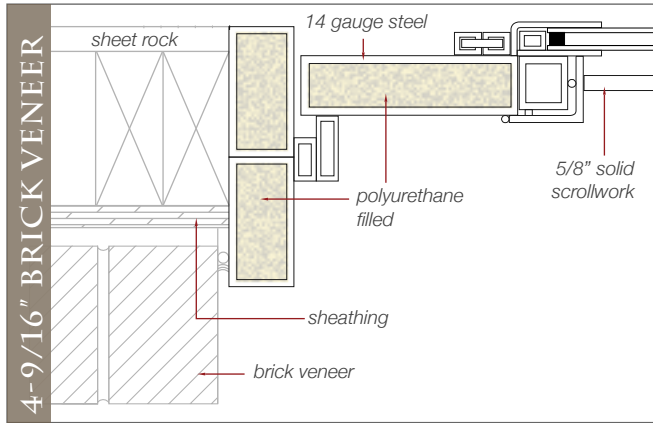
### All Forged Iron Doors Feature

- ◆ A wide variety of available configurations
- ◆ 14 gauge frames and panels
- ◆ Frames and panels fully insulated with polyurethane foam
- ◆ E-coat and powder coat for long life
- ◆ 1-1/2" x 6" frames (8" available)
- ◆ 1-3/4" x 5-1/2" door panel tubing
- ◆ Heavy duty barrel hinges with grease fittings
- ◆ 5/8" solid steel scroll work
- ◆ Optional faux finishes (matte black standard)
- ◆ 5 year limited warranty

See Reverse Side for Wall & Trim Details

# FORGED IRON TRIM OPTIONS

Standard 6" iron door frame shown on all drawings



5768 Distribution Dr.  
Memphis, TN 38141



Phone: (901) 547-1198 (x107)  
Fax: (901) 547-1148

COMPLEX INDUSTRIES

<http://www.complex-industries.com>